

**CAT304**

**WHAT IS**

**MBTI**

**16 PERSONALITY**

DEFENDER

PERSONALITY

# ISFJ



Life  
credo

Forget it, I'll do it myself

Correspondi  
ng role

captain  
america



Extrove  
rt (E)    Introve  
rsion(I)



Intuitio  
n(N)    Reality(  
S)



Think(T  
)    Emotio  
n(F)



Judgme  
nt(J)    Percept  
ion(P)



ISFJ

16

ISFJ

16

ISFJ

16

ISFJ

16

IS

Responsible moral model

Don't know how to reject others

altruist

Gentle and friendly, often taking the initiative to mediate

A protective umbrella with dedication

When angry, he becomes a different person

EXECUTIVE

PERSONALITY

# ESTJ



Life  
credo

## King Juan, it's me

Corresponding  
role

Hermione



Extroversion (E)    Introversion (I)



Intuition (N)    Sensuality (S)



Thinking (T)    Feeling (F)



Judgment (J)    Perception (P)



# ESTJ 16 ESTJ 16 ESTJ 16 ESTJ 16 ES

A resolute and resolute teaching director

Attention to details, very fussy

Pursue efficiency and trust authority

A control freak who really hates stupid people

I have a bad temper and only dare to watch from a distance

Decisive and realistic

COMMANDER



PERSONALITY

# ENTJ



Life  
credo

The root of all problems is not  
being strong enough

Correspond  
ing role  
  
Voldemort



Extro  
rt (E)    Intro  
rsion(I)



Intutio  
n(N)    Reality(  
S)



Think(T  
)    Emotio  
n(F)



Judgme  
nt(J)    Percept  
ion(P)



ENTJ 16 ENTJ 16 ENTJ 16 ENTJ 16 E

A domineering president who hates beating  
around the bush

Visionary and insightful

The king of execution who never delays

Absolutely confident, always slay

Value efficiency; like to direct others to do things

Good at setting goals



DEBATE

PERSONALITY

# ENTP



Life  
credo

How to be super annoying and  
still cute at the same time

Correspondi  
ng role

Fox Nick



Extrove  
rt (E)    Introve  
rsiion(I)



Intuitio  
n(N)    Reality(  
S)



Think(T  
)    Emotio  
n(F)



Judgme  
nt(J)    Percept  
ion(P)



ENTP 16 ENTP 16 ENTP 16 ENTP 16 E

Humorous brainstorming expert

Rule breaker for eyebrow fractures

Quick response and strong alertness

Half extrovert, half introvert

Curious and always learning

Dislike routine, rebellious

LOGICIAN

PERSONALITY

# INTP



Life  
credo

why why why

Correspondi  
ng role

Sherlock  
Holmes



Extrover  
t (E)    Introver  
sion (I)



Intutio  
n (N)    Reality  
(S)



Think (T  
)    Emotio  
n (F)



Judgme  
nt (J)    Percept  
ion (P)



INTP 16 INTP 16 INTP 16 INTP 16

Logic king who loves exploration

Good at analysis, often performing theater in the brain

procrastinator

Truth seeker, high intelligence nerd

Don't understand emotional complaints

Build a perfect logical reasoning maze in your brain



ENTERTAINER



PERSONALITY

# ESFP



Life  
credo

## What is emo?

Correspondi  
ng role

Luffy



Extro  
rt (E)    Intro  
rsion(I)



Intutio  
n(N)    Reality(  
S)



Think(T  
)    Emotio  
n(F)



Judgme  
nt(J)    Percept  
ion(P)



ESFP 16 ESFP 16 ESFP 16 ESFP 16 ES

Sheniu ceiling

Know how to handle the opposite sex  
very well

live a chic life

A performative personality who loves to make people  
happy

Don' t care much about other people' s opinions

Strong receptivity and practicality

ADVENTURER



PERSONALITY

# ISFP



Life  
credo

Live first and talk  
about the rest later.

Correspondi  
ng role

harry  
potter



Extrove  
rt (E)    Introve  
rsion(I)



Intuitio  
n(N)    Reality(  
S)



Think(T  
)    Emotio  
n(F)



Judgme  
nt(J)    Percept  
ion(P)



ISFP

16

ISFP

16

ISFP

16

ISFP

16

IS

Soft personality but not temperamental

a tolerant heart

Desire to communicate and share

Two-dimensional, hate people

The happy-go-lucky artist

Like to explore unknown things



LOGISTICIAN



PERSONALITY

# ISTJ



Life  
credo

Isn't it good to use  
the emo time to work?

Correspondi  
ng role

Sheldon



Extrove  
rt (E)    Introve  
rsion(I)



Intuitio  
n(N)    Reality(  
S)



Think(T  
)    Emotio  
n(F)



Judgme  
nt(J)    Percept  
ion(P)



## ISTJ

16

## ISTJ

16

## ISTJ

16

## ISTJ

16

## IS

Calm and experienced executor

Thoughtful and responsible

Goals are clear and unshakable

A steady lone ranger who follows the rules

Stifling routine

real workaholic

ADVOCATE

PERSONALITY

# INFJ

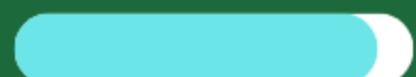


Life  
credo

Pursuing perfection while  
procrastinating endlessly

Correspondi  
ng role

dragon  
mother



Extrove  
rt (E)    Introve  
rsion(I)



Intuitio  
n(N)    Reality(  
S)



Think(T  
)    Emotio  
n(F)



Judgme  
nt(J)    Percept  
ion(P)



## INFJ

16

## INFJ

16

## INFJ

16

## INFJ

16

Frequent self-reflection

Insight into the demagogic manipulator

Friendly and kind, caring about people

Guide to the spiritual world, God of believers

An idealist who is soft on the outside but strong  
on the inside

A social chameleon who finds socializing tiring

PROTAGONIST

★ PERSONALITY

# ENFJ



Life  
credo

It's impossible to show it off. It  
really can't be displayed badly.

Correspondi  
ng role

Judy Rabbit



Extrove  
rt (E)    Introve  
rsion(I)



Intuitio  
n(N)    Reality(  
S)



Think(T  
)    Emotio  
n(F)



Judgme  
nt(J)    Percept  
ion(P)



ENFJ ⑆ ENFJ ⑆ ENFJ ⑆ ENFJ ⑆ E

Educator who teaches earnestly and sincerely

Enthusiastic and wide circle of  
friends

Very concerned about other  
people's opinions

Extraordinary empathy and gentleness

Strong sense of justice and willingness to help others

Catalyst for individual and team  
development



CONSUL

PERSONALITY

# ESFJ



Life  
credo

Come on, come  
on and love me

Correspondi  
ng role

spongebob



Extrove  
rt (E)    Introve  
rsion(I)



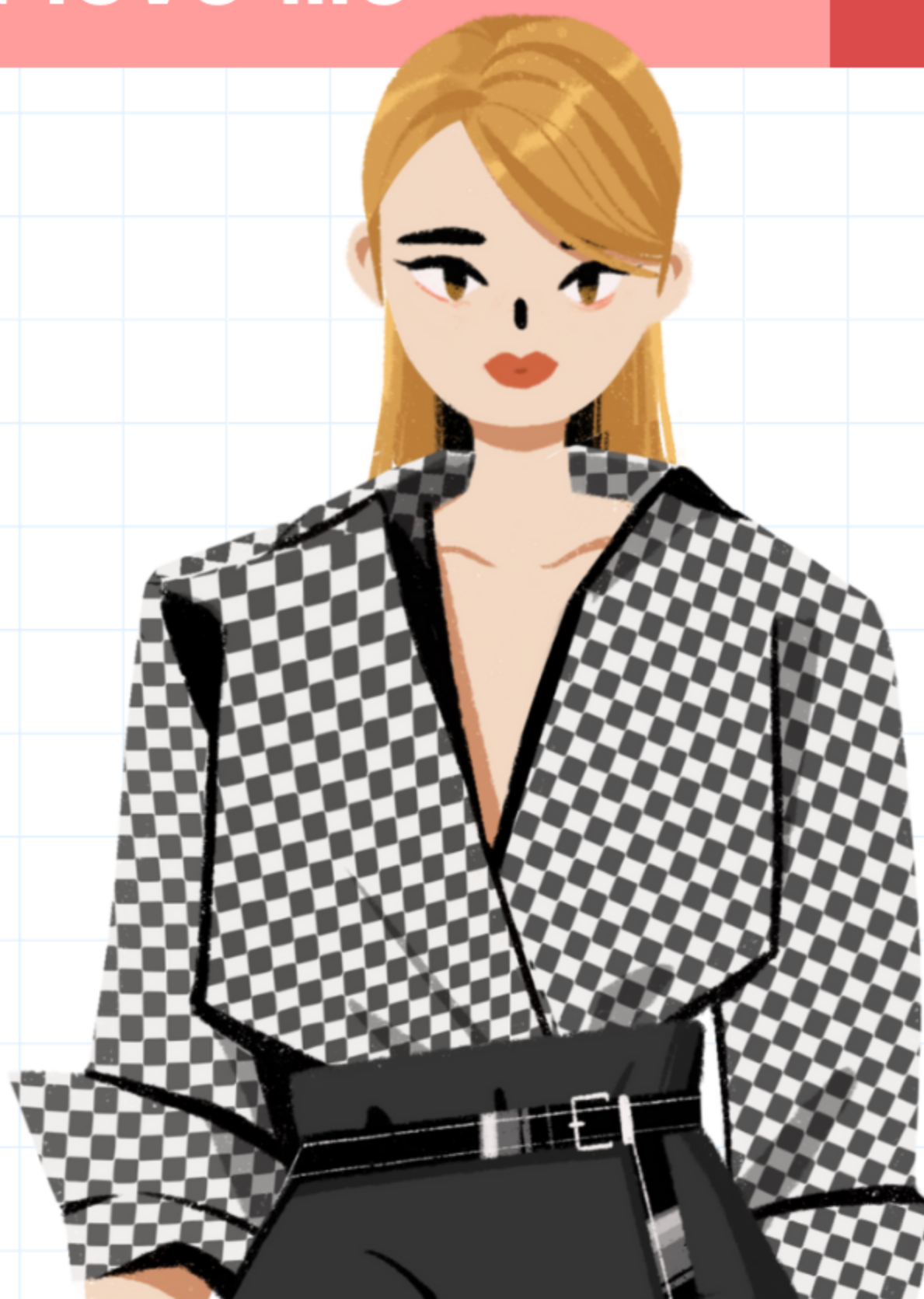
Intuitio  
n(N)    Reality(  
S)



Think(T  
)    Emotio  
n(F)



Judgme  
nt(J)    Percept  
ion(P)



ESFJ 16 ESFJ 16 ESFJ 16 ESFJ 16 ES

The best partner for selfless dedication

Able to speak eloquently and can chat with  
anyone

Don't know how to hide  
emotions

A motherly personality who is used to taking care of her  
friends

Tend to ignore one's own needs

Responsible and strong sense of justice

ENTREPRENEUR

PERSONALITY

# ESTP



Life  
credo

I am the perfect  
beauty

Correspondi  
ng role

Sirius



Extro  
rt (E)    Intro  
rsion(I)



Intutio  
n(N)    Reality(  
S)



Think(T  
)    Emotio  
n(F)



Judgme  
nt(J)    Percept  
ion(P)



IS P

16

IS P

16

IS P

16

IS P

16

IS

A charlatan who enjoys vengeance

Natural and unpretentious

like to express themselves

An anti-involution expert who lives in the  
present moment

Know how to persuade others

Like to challenge limits

ARCHITECT

PERSONALITY

# INTJ

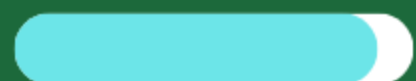


Life  
credo

Please forgive me for living  
my whole life loving  
freedom

Correspondi  
ng role

Snape



Extrover  
t (E)    Introver  
sion (I)



Intuitio  
n (N)    Reality  
(S)



Think (T  
)    Emotio  
n (F)



Judgme  
nt (J)    Percept  
ion (P)



## INTJ

16

## INTJ

16

## INTJ

16

## INTJ

16

The lonely and indifferent boss behind the  
scenes

Independent, free and creative

ddl perfect planner

An idealist with a fiery heart but a calm exterior

Opinionated sociophobic person

Cold and rational, profound insight





VIRTUOSO

# ISTP

PERSONALITY



Life  
credo

Life is an island

Correspondi  
ng role

black  
widow



Extro  
rt (E)    Intro  
rsion(I)



Intuitio  
n(N)    Reality(  
S)



Think(T  
)    Emotio  
n(F)



Judgme  
nt(J)    Percept  
ion(P)



ISTP

16

ISTP

16

ISTP

16

ISTP

16

IS

The versatile adventure king

People's joys and sorrows are not  
the same

Looks very tolerant, but actually I am speechless

Walking handicraft

Computer repairer

forever liberal

CAMPAIGNER

# ENFP

PERSONALITY



Life  
credo

Let love and romance fill  
the world

Correspondi  
ng role

Uzumaki  
Naruto



Extro  
rt (E)    Intro  
rsion(I)



Intuitio  
n(N)    Reality(  
S)



Think(T  
)    Emotio  
n(F)



Judgme  
nt(J)    Percept  
ion(P)



ENFP 16 ENFP 16 ENFP 16 ENFP 16 E

A middle school boy who loves socializing

Strong ability to improvise

Inspiration above all  
else

Passionate and imaginative

Angel! I want to post like crazy

A happy puppy who loves to be a social  
gangster

MEDIATOR

PERSONALITY

# INFP



Life  
credo

Escape is shameful  
but useful

Correspondi  
ng role

scarlet  
witch



Extrove  
rt (E)    Introve  
rsion(I)



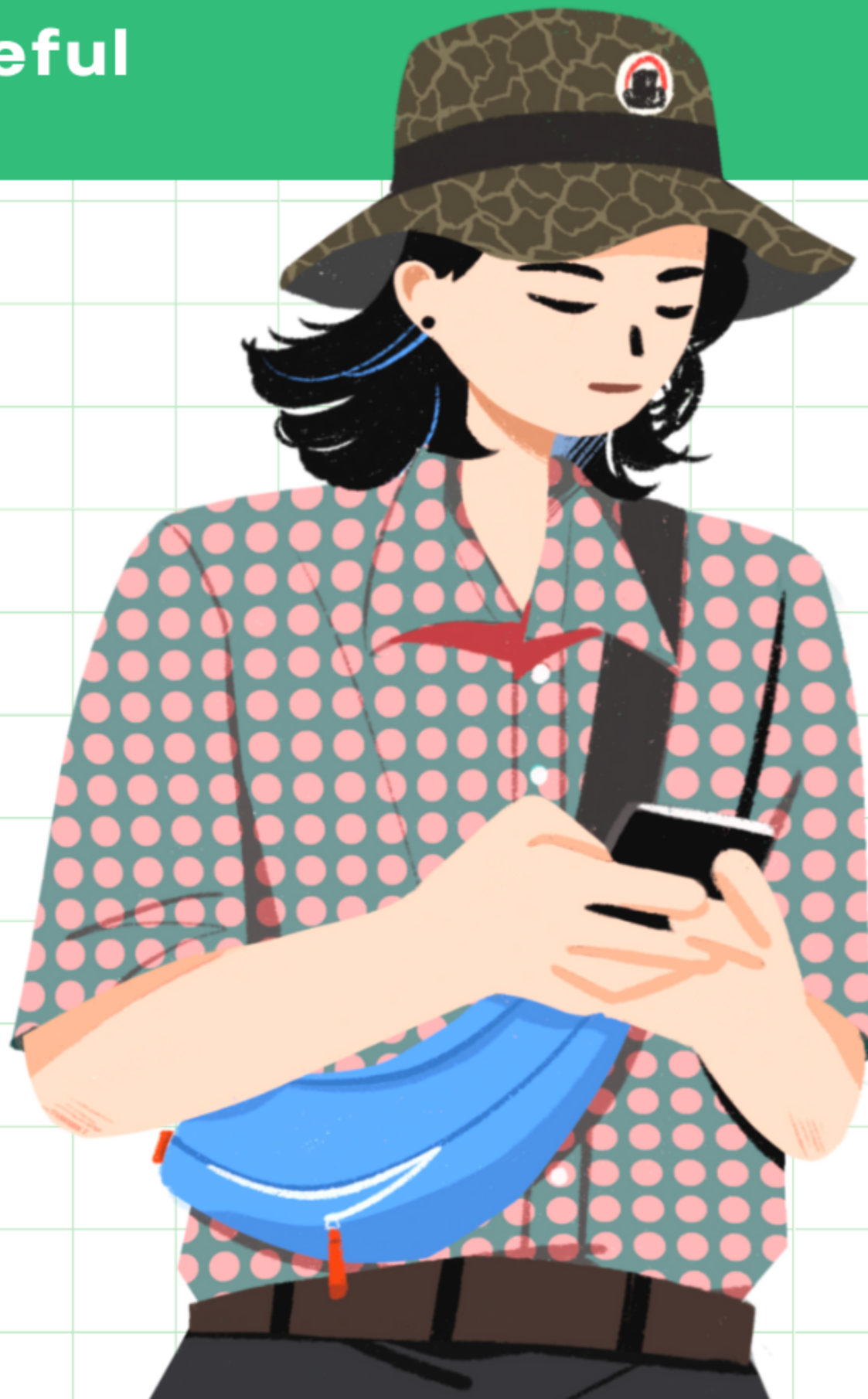
Intuitio  
n(N)    Reality(  
S)



Think(T  
)    Emotio  
n(F)



Judgme  
nt(J)    Percept  
ion(P)



INFP ①⑥ INFP ①⑥ INFP ①⑥ INFP ①⑥

A sociophobic person who loves to think wildly

Crying cat head who loves to surf the Internet

Emotional, considerate and empathic

Loves fantasy and is not good at words

Soft and cute inside

A good listener and empathic